



JUST TRANSITION PLATFORM MEETING

COAL REGIONS
IN TRANSITION
VIRTUAL WEEK

CARBON-INTENSIVE
REGIONS SEMINARS

15 - 17 NOVEMBER 2021



Introduction to the Just Transition Platform Working Groups

Dr **Sander Happaerts**
DG REGIO, Smart and Sustainable Growth Unit

4th Just Transition Platform meeting, 15 November 2021

The Just Transition Platform (JTP)

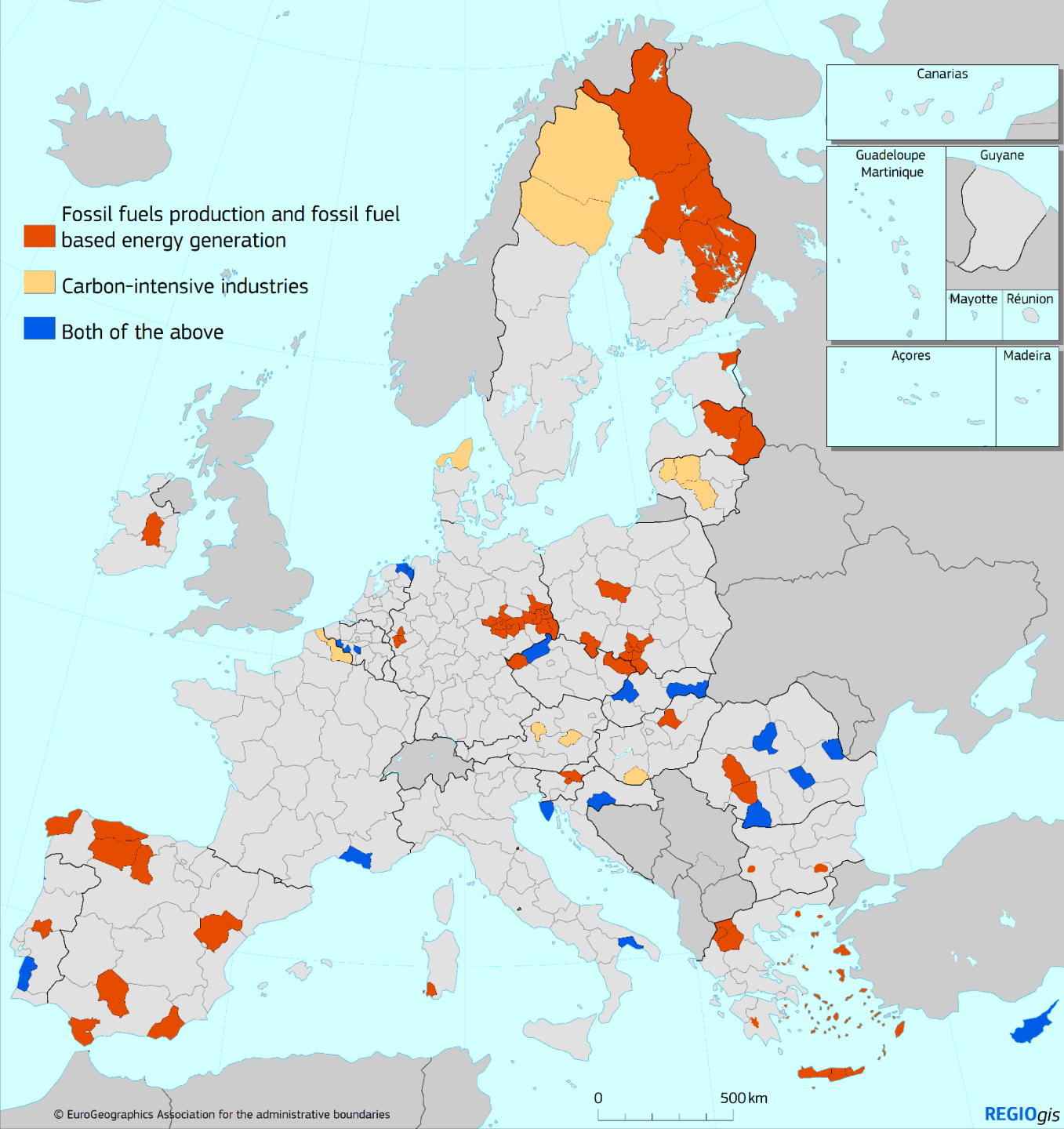
- **Assist all stakeholders** in accessing JTM support
- High-level **JTP events** help to:
 - share knowledge and good practices
 - support capacity-building and exchanges across sectors
 - provide advice on just transition to authorities and stakeholders involved in JTM-related activities
- **Dedicated webpage** with helpdesk and database of projects and experts
- **Working groups** for carbon intensive-regions
- Link to Coal Regions in Transition initiative (dedicated work stream for coal, peat, oil shale regions)



Commission recommendations for JTF scope

European Semester Country Reports 2020, Annex D

ec.europa.eu/info/publications/2020-european-semester-overview-investment-guidance-just-transition-fund-2021-2027-member-state-annex-d_en



JTF in carbon-intensive regions

- The transition to a climate-neutral Europe in 2050 will not only affect coal regions or declining sectors
- Sectors with high carbon-intensity are expected to undergo significant **transformation**
 - for instance steel, metals, cement, chemicals...
- JTF will support territories that are heavily **dependent on carbon-intensive industries**...
- ... and that experience a **negative impact** from the transition by 2030 or before, such as:
 - **social** impacts, linked to unemployment or needs for reskilling
 - **economic** impacts, linked to changes in production patterns
 - **demographic, health** or **environmental** impacts

Addressing knowledge gaps

- What are the pathways of carbon-intensive industries, and which impacts will this have in EU regions?
 - Calculations of regional employment impact of EU ETS installations (<https://europa.eu/!nkXRqB>)
 - Regional industrial transitions to climate neutrality: sectors, locations and socio-economic impacts (ongoing study by OECD)
- How can we make sure that this transition happens in a fair way?
 - Working Groups on carbon-intensive regions
 - Knowledge capitalisation work of the Just Transition Platform



Contact:

Sander Happaerts, policy analyst sustainable growth

Smart and Sustainable Growth Unit, DG Regional and Urban Policy, European Commission

Sander.HAPPAERTS@ec.europa.eu

Visit the Just Transition Platform: ec.europa.eu/info/strategy/priorities-2019-2024/european-green-deal/finance-and-green-deal/just-transition-mechanism/just-transition-platform_en

Read the Staff Working Document on TJTPs:

ec.europa.eu/regional_policy/sources/thesfunds/jtf/swd_territ_just_trans_plan_en.pdf

REGIONAL INDUSTRIAL TRANSITIONS TO CLIMATE NEUTRALITY

Andrés Fuentes Hutfilter & Jolien Noels

12 November 2021

Centre for Entrepreneurship, SMEs , Regions and Cities (CFE)

 @OECD_local

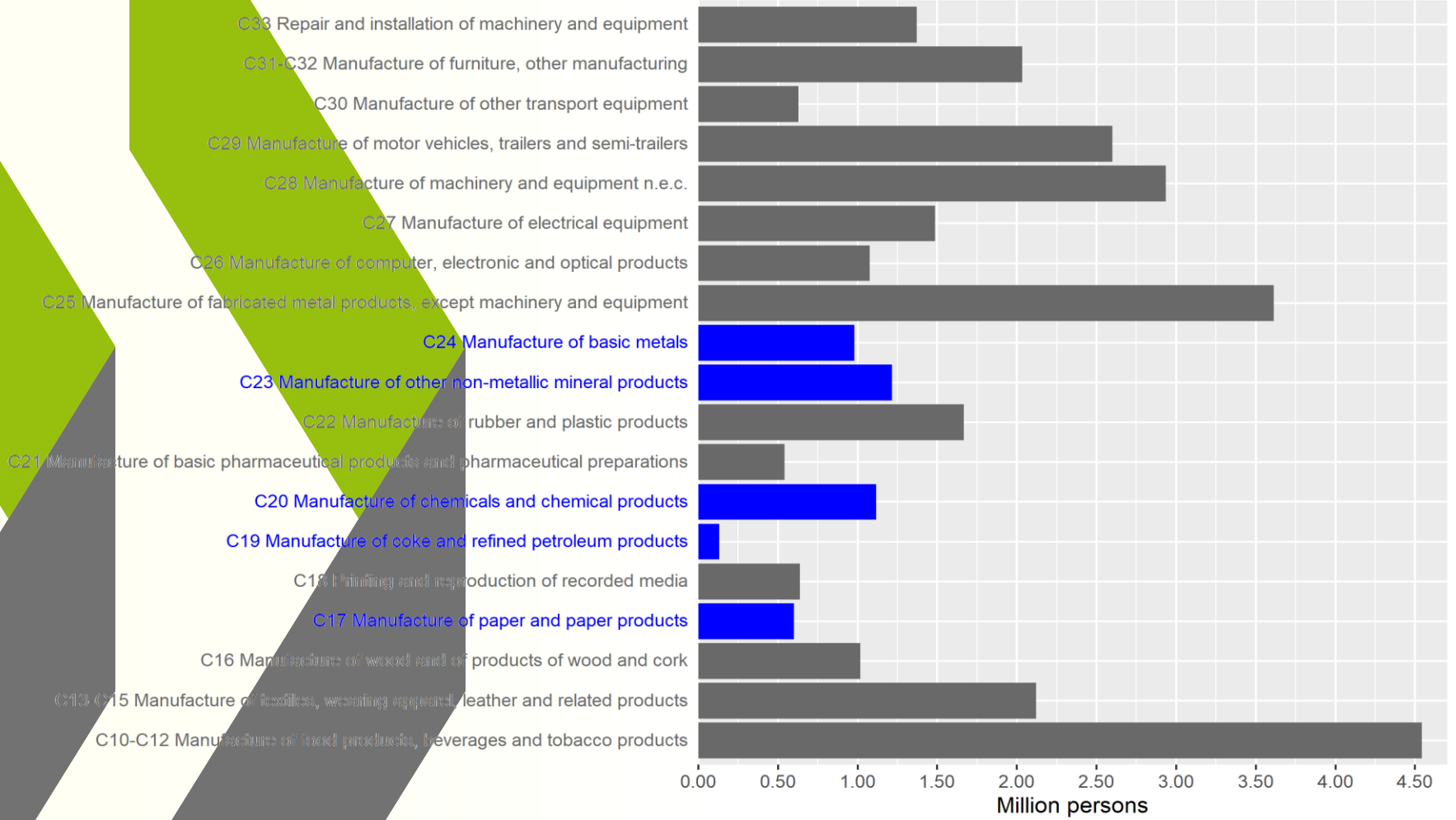
 www.linkedin.com/company/oecd-local

 www.oecd.org/cfe

About

- Ongoing work
- This work is supported by the European Commission, DG Regio

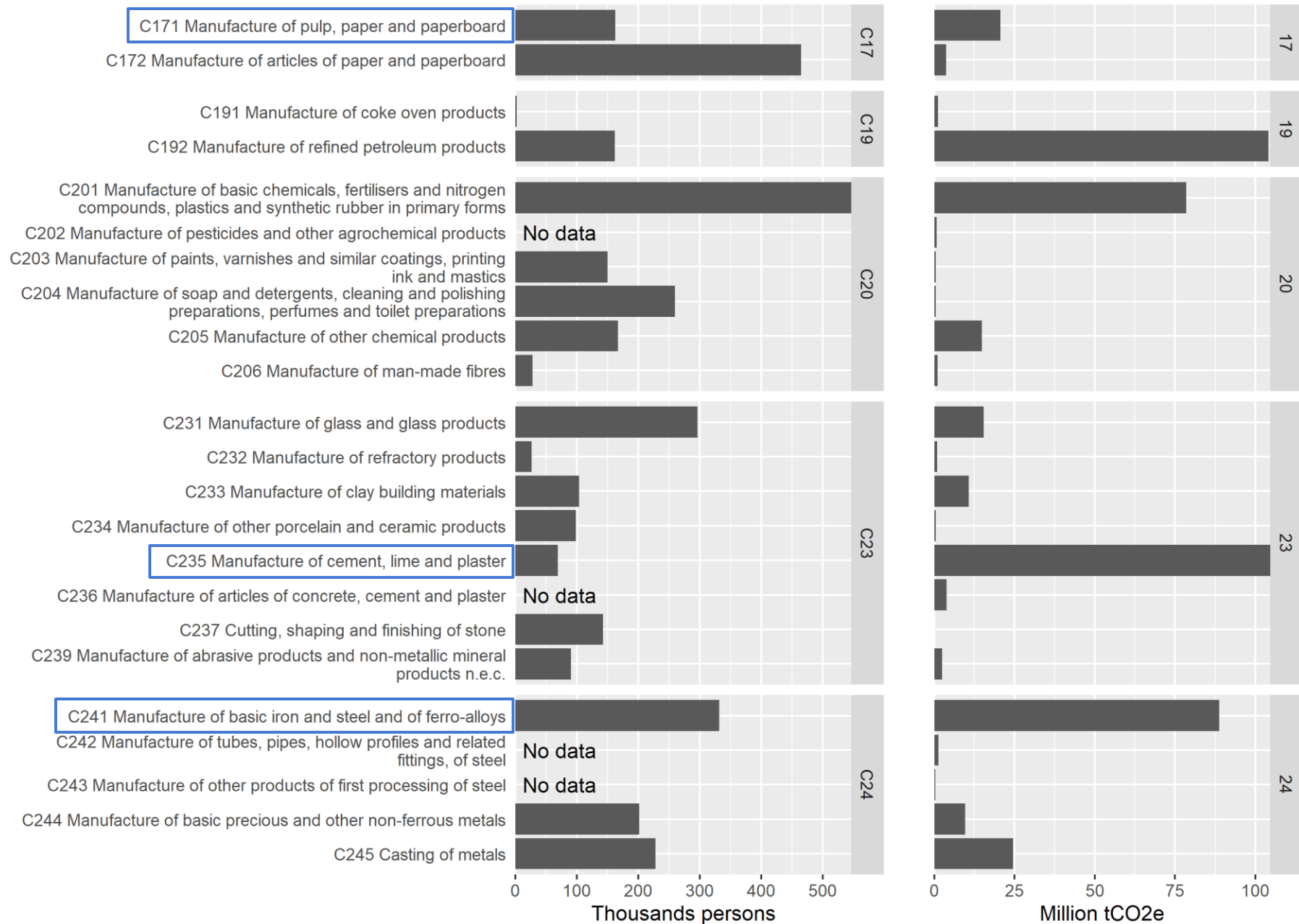
Employment in hard-to-abate industry



Key activities often nested within the selected 2-digit sectors

Source: Eurostat

Emissions concentrated in 3-digit subsectors



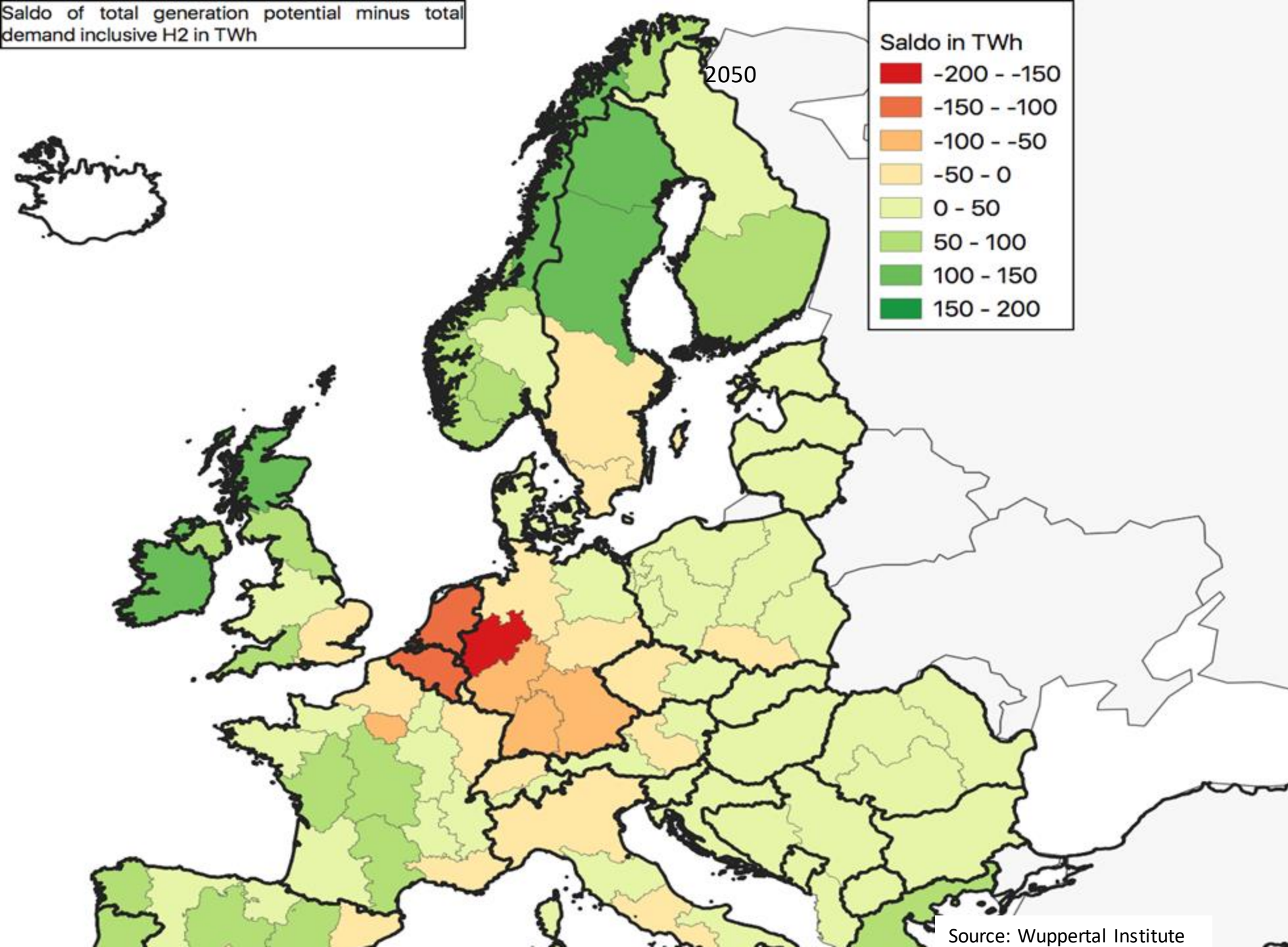
Source: Eurostat and EU-ETS/ORBIS matched dataset

Sectoral challenges for regional development

- **Refined oil products and coke:** biggest relative employment loss
- **Cement:** most dependent on CCS.
- **Chemicals:** biggest demand for hydrogen, followed by **Steel**
- **Paper and pulp:** to face competition for biomass

The CIRCULAR ECONOMY will reduce some of these pressures.

Saldo of total generation potential minus total demand inclusive H2 in TWh



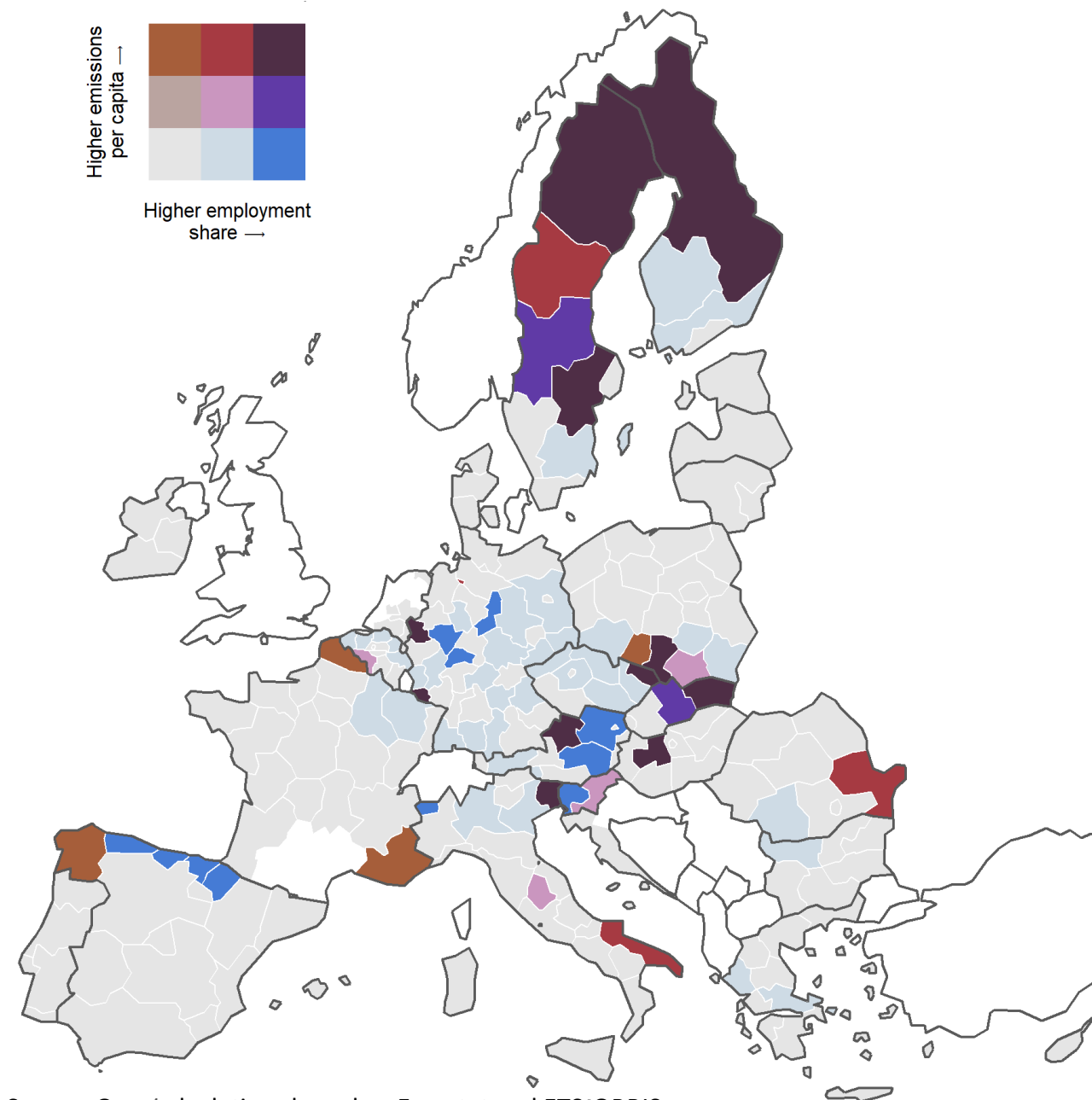
Source: Wuppertal Institute

Identifying regions: Basic metals

Both **employment shares** and **emissions per capita** are indicators for the intensity of needed transformations in heavy industry

Focus on 2 processes in basic metals: steel and aluminium production

Steel plant conversion to hydrogen may be challenging due to **geographical dispersion**

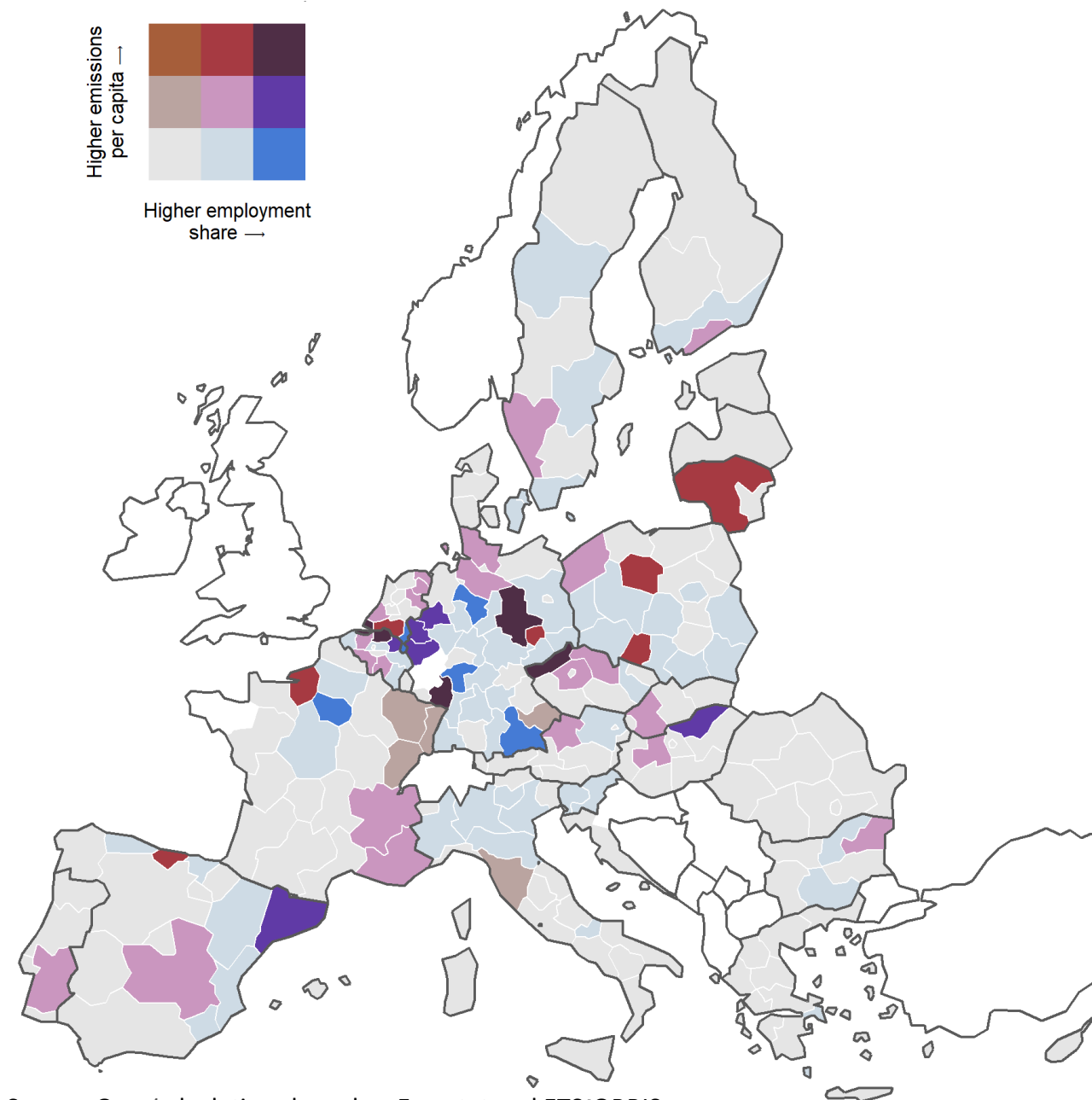


Source: Own calculations based on Eurostat and ETS-ORBIS

Identifying regions: Chemicals

High **employment shares** and **emissions per capita** in chemical manufacturing are mostly in Central and Western European regions

Both indicators need not coincide:
HQ regions vs production sites vs ...



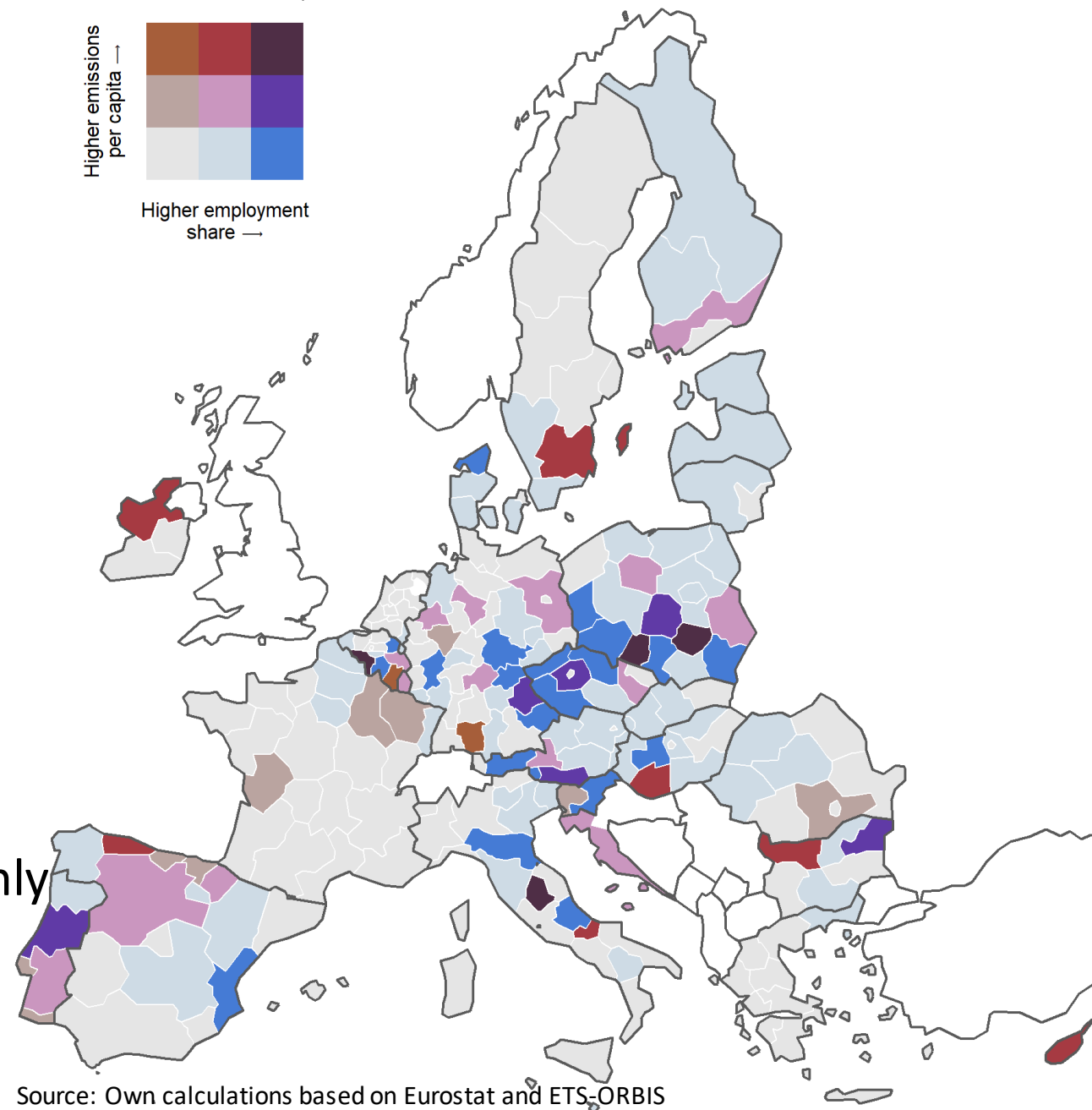
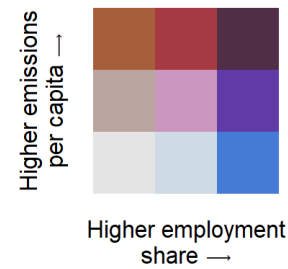
Source: Own calculations based on Eurostat and ETS-ORBIS

Identifying regions: Other non-metallic mineral products

Focus on cement

Many regions with high **employment shares** but also driven by glass and ceramics etc.

High **emissions per capita** reflect more emissions-intensive activity in cement only



Source: Own calculations based on Eurostat and ETS-ORBIS

Thank you!



Andres.fuentes@oecd.org

Jolien.noels@oecd.org

Twitter: [@OECD_local](https://twitter.com/OECD_local)

LinkedIn: www.linkedin.com/company/oecd-local

Website: www.oecd.org/cfe





The JTP Working Groups in practice

Elodie Salle, JTP Secretariat

Monday 15 November 2021

JTP Working Groups

Overall objective:

WGs will establish a cooperation between the European Commission, Member States and stakeholders on questions related to the implementation of Territorial Just Transition Plans with a special focus on the relevant sectors

Main milestones:

- To **gather varied groups of stakeholders** around a specific topic
- To **develop a common just transition vision** with stakeholders
- To **define a strategic approach on stakeholders' engagement** when the Territorial Just Transition Plans are implemented in the regions impacted by the transition

JTP Working Groups

- 3 WGs on **carbon-intensive sectors**:
 - **Steel**
 - **Cement**
 - **Chemicals**

→ Main output: action plans addressing issues faced by regions implementing low-carbon transition
- 1 WG on **Horizontal Stakeholder Strategy** (cross-cutting)

→ Main output: stakeholder engagement strategy to involve society in a cross-cutting manner in the implementation of the TJTPs



1

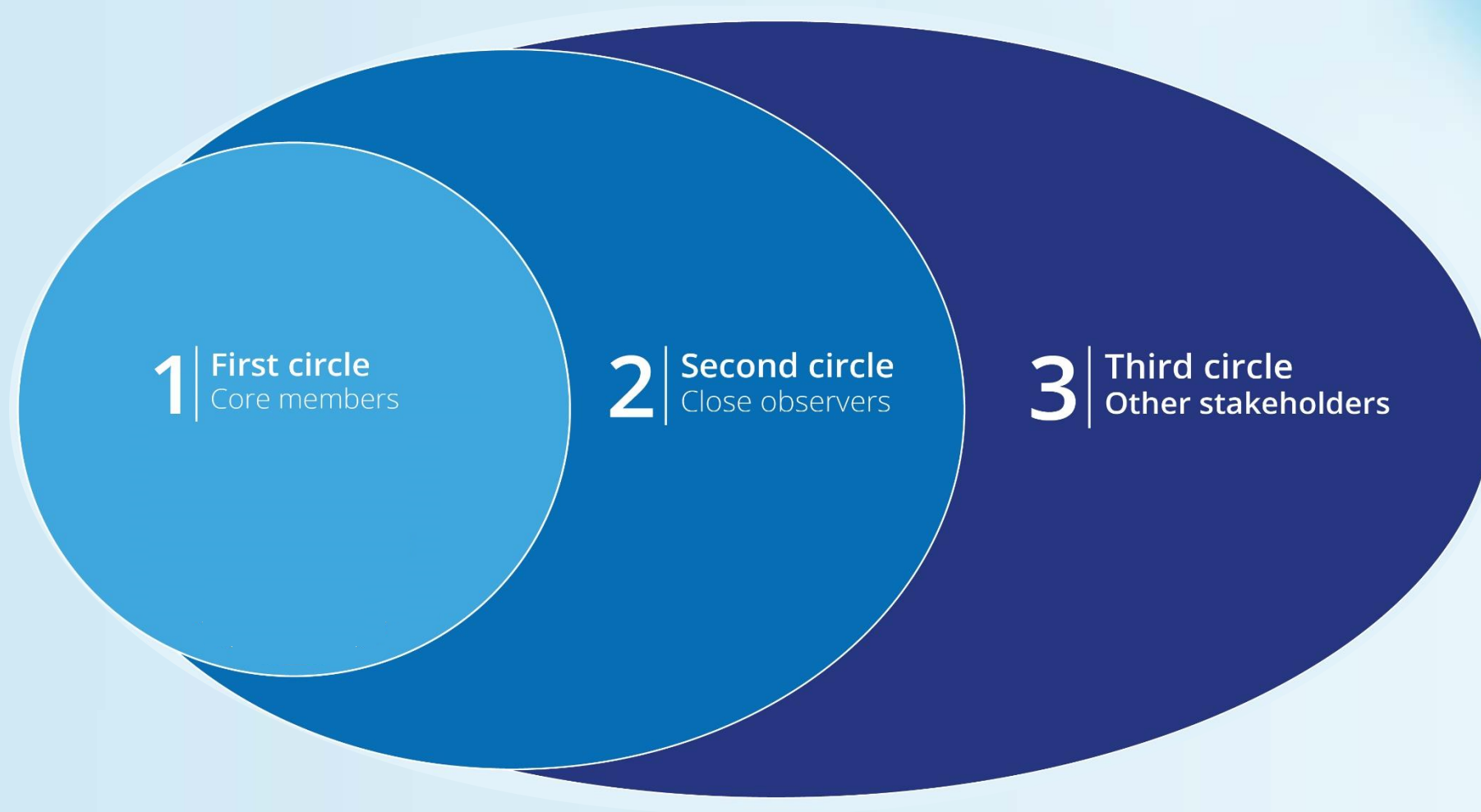
Membership

Membership

Members of the Working Groups are:

- A) Member States' authorities
- B) Local and Regional authorities
- C) Associations representing regional, local, urban and other public authorities
- D) Organisations representing economic and social partners
- E) Bodies representing civil society, such as NGOs

Membership

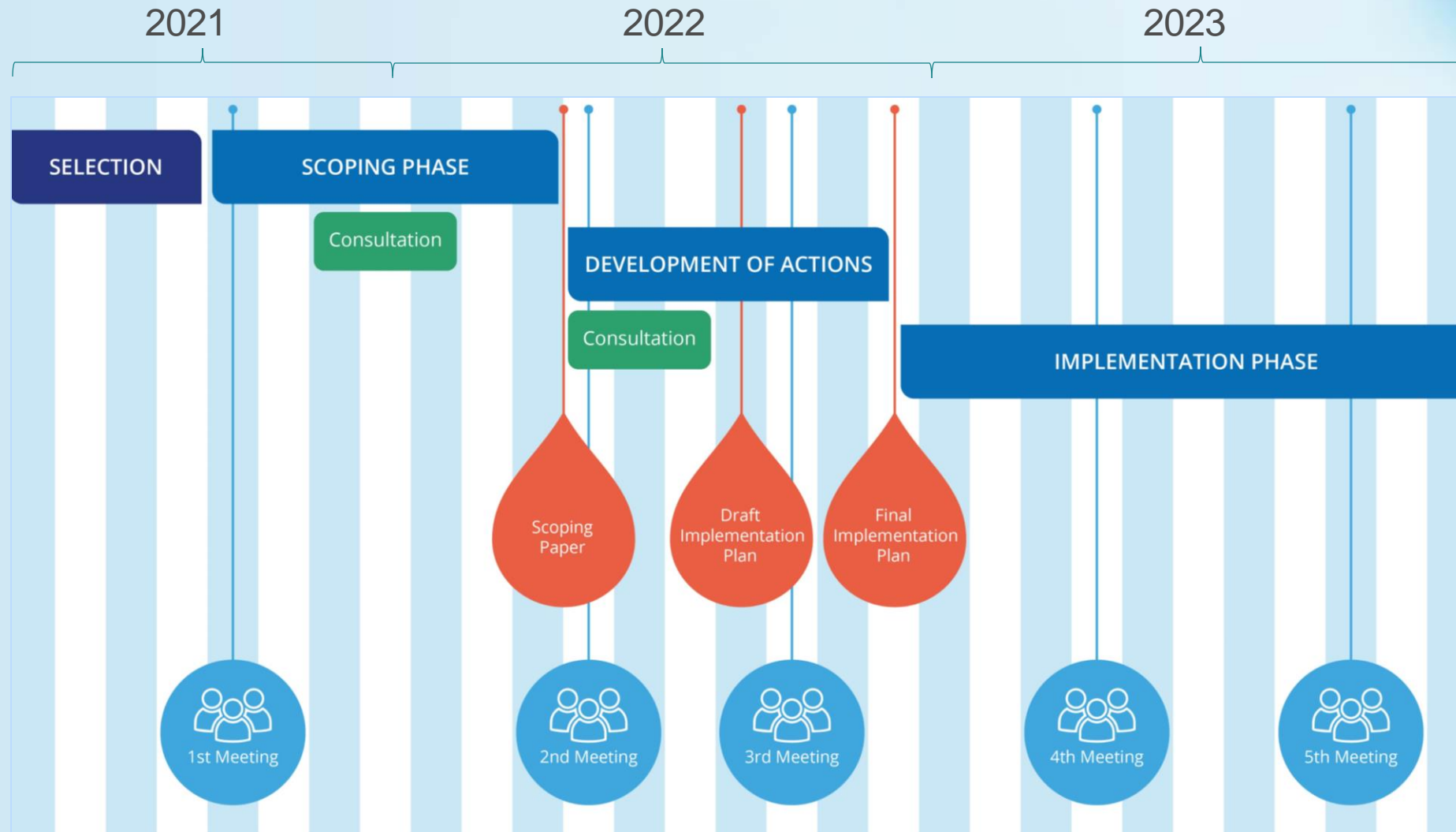




2

Timeline and milestones

Timeline



Outcomes and deliverables

The WGs are expected to produce the following outcomes and deliverables:

- 1) Scoping Paper**, outlining the priority theme(s) identified by the WG, its objectives and expected results
- 2) Draft Implementation Plan**, including the set of provisional actions, how the WG plans to execute the actions and rationale for why the actions are important for the priority theme(s)
- 3) Final Implementation Plan**, including the final set of actions to be implemented by the WG
- 4) Actions**, for which implementation will be lead by one or more Action Leader

WG meetings

Each WG will meet twice a year:

- **First meeting** will kick-start the work of the WG (Scoping phase)
- **Second meeting** will aim at identifying and defining the provisional set of actions (Development of actions)
- **Third meeting** will serve to agree on the final set of actions to be included in the Implementation Plan (Development of actions)
- **Fourth and fifth meeting** will be dedicated to discuss the progress in realising the Implementation Plans (Implementation phase)

Whenever possible, the WG meetings will be organised back-to-back with the JTP event.

3

The JTP Secretariat

JTP Secretariat

Each WG is supported by a **dedicated Secretariat** who will support in facilitating its activities.

The support activities provided are the following:

- **Strategic support** (e.g. providing advice and guidance, monitor WG activities and progress)
- **Operational support** (e.g. develop templates for deliverables, provide and manage a WG shared platform, organise the meetings and consultations)
- **Thematic support** (e.g. needs assessment, collection of good practices, identification of gaps per sector)

Secretariat supporting the Working Groups



Horizontal Stakeholder Strategy

Elodie Salle



Chemicals

Jan-Philipp Kramer



Steel

Johannes Venjakob



Cement

Katja Witte

Thank you

Presenter: Elodie Salle, JTP Secretariat

Contact: secretariat@justtransitionplatform.eu

